

MACROINVERTEBRATE GROUPS

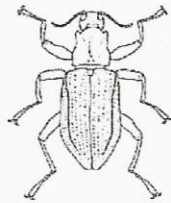
BEGINNER'S PROTOCOL - PICTURE KEY

GROUP 1 *These organisms are generally pollution-intolerant.*

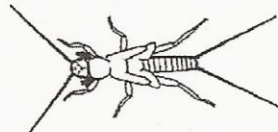
Their dominance generally signifies EXCELLENT-GOOD WATER QUALITY



RIFFLE BEETLE
(larva)



RIFFLE BEETLE
(adult)



STONEFLY
(nymph)



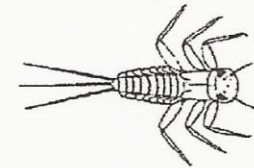
CADDISFLY
(larva)



SNAIL



SNAIL



MAYFLY
(nymph)



MAYFLY
(nymph)

opens to
the right

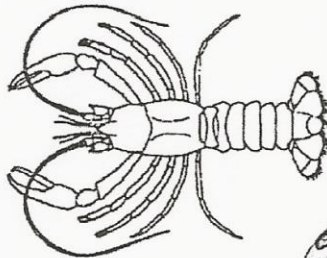
GROUP 2 *These organisms exist in a WIDE RANGE of water quality conditions*



DRAGONFLY
(nymph)



CRANEFLY
(larva)



CRAYFISH



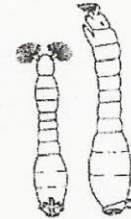
SOWBUG



FILTERING
CADDISFLY
(Hydropsychidae)
(larva)



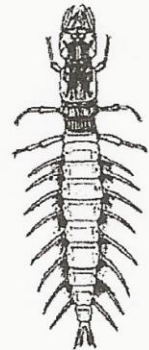
BLACKFLY
(pupa)



BLACKFLY
(larva)



SCUD



HELLGRAMMITE
(Dobsonfly)
(larva)

GROUP 3 *These organisms are generally tolerant of pollution.*
Their dominance usually signifies FAIR-POOR WATER QUALITY



MIDGE
(larva)



MIDGE
(larva)

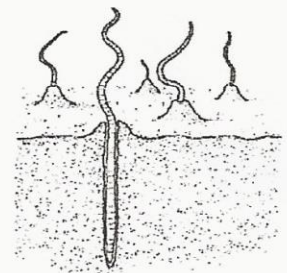


MIDGE
(pupa)



opens to
the left

POUCH
SNAIL
(Physidae)



AQUATIC WORM